

Roll No.

--	--	--	--	--	--	--	--	--	--	--	--

Total No. of Pages : 04

Total No. of Questions : 15

B.Tech.(ME) (2018 Batch) (Sem.-3)

MACHINE DRAWING

Subject Code : BTME-303-18

M.Code : 76419

Time : 3 Hrs.

Max. Marks : 60

INSTRUCTIONS TO CANDIDATES :

1. There are three sections in this question paper. Attempt ALL the questions from SECTION-A.
2. Attempt any TWO questions from SECTION-B and any ONE question from SECTION-C.
3. First angle projection to be used. You may assume any missing dimension.

SECTION-A

Write briefly :

1. Draw conventions for 'Cutting Plane Line' and 'Gun Metal'.
2. Explain unilateral and bilateral tolerances with an example.
3. With suitable sketch, explain the method of dimensioning of i) Arc ii) Angle.
4. What are the advantages of welded joints over riveted joints?
5. Why are split muff couplings used in preference to solid muff?
6. What is a tap bolt?
7. What is lock nut? How does it work?
8. If two shafts to be flange coupled are slightly misalignments, which type of flange coupling would you suggest and why?
9. What is the function of blow off cock?
10. What is application of swivel bearing?

SECTION-B

11. Draw freehand sketch of top half sectioned front view of muff coupling.
12. Draw freehand sketches of front view and top view of a knuckle joint.
13. Draw a full sectioned freehand sketch of spigot and socket pipe joint.

SECTION-C

14. Assemble the parts of **Screw Jack** given in Fig.1 and draw the following views (with bill of materials) :
 - a) Elevation left half in section
 - b) Top view
15. Assemble the parts of a **Stop Valve** given in Fig.2 and draw the following views (with bill of materials) :
 - a) Elevation full in section
 - b) Plan

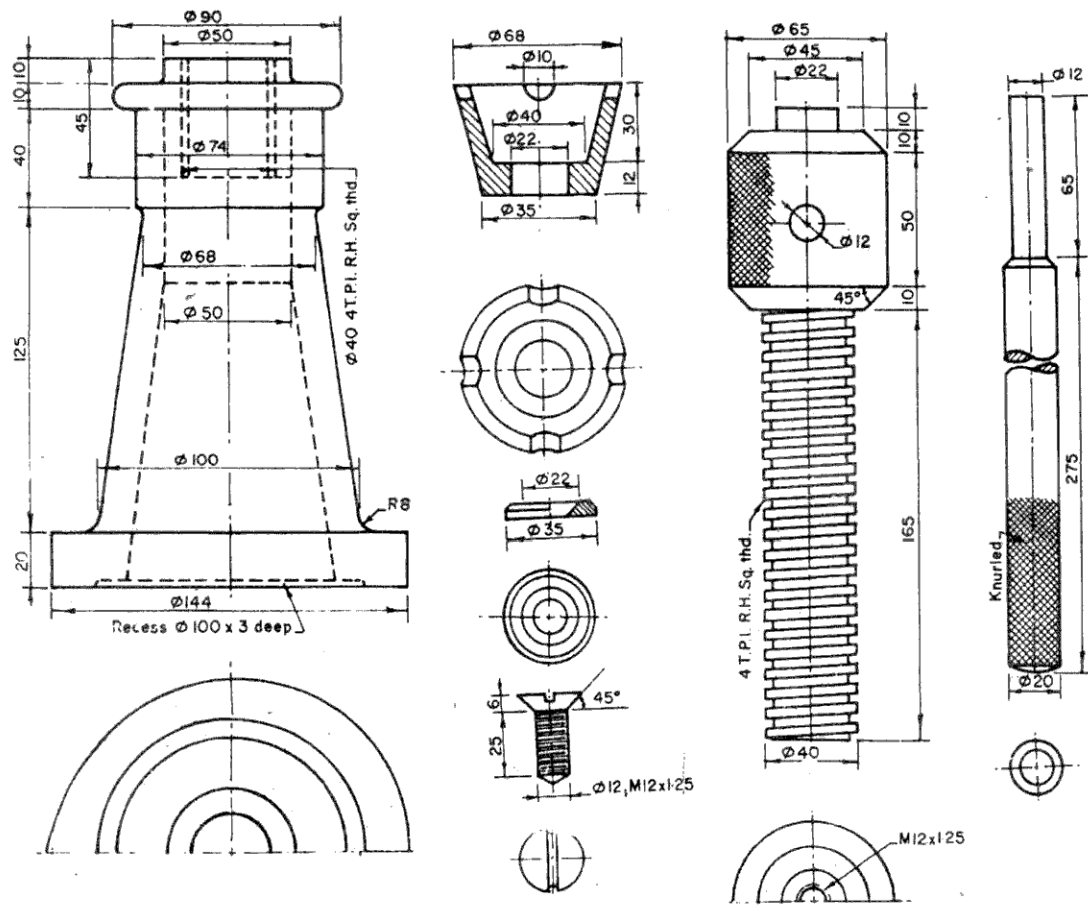


FIG.1

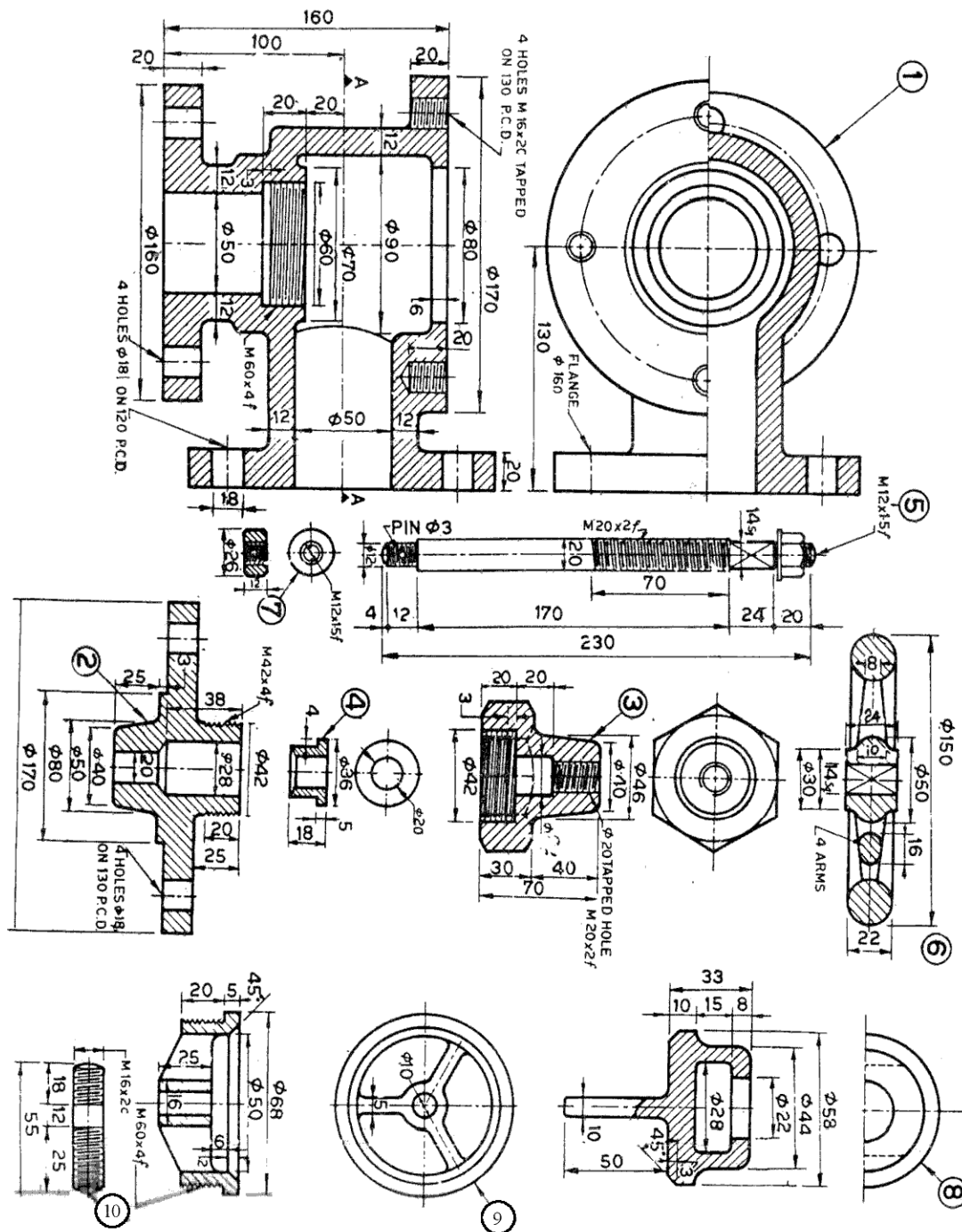


FIG.2

NOTE : Disclosure of Identity by writing Mobile No. or Making of passing request on any page of Answer Sheet will lead to UMC against the Student.